

# FARMADA

## ELXIR64

### Fertilizer Applicator Bar



Unit: Elxir 64, s/n 1001  
Approximate Acres: 2600  
Special Sale Price: \$52,000  
Current Location: Chillicothe, MO

The Elxir64 is a 5 section toolbar designed with the professional farmer in mind. This unit is a 17 row 30" row spacing. It is able to apply liquid, dry, anhydrous fertilizer, nitrogen stabilizer, or any combination of these products. This versatile bar is designed to operate in all types of field conditions from flat fields to terraced and contoured land, and in minimum till to heavy no-till farming practices.

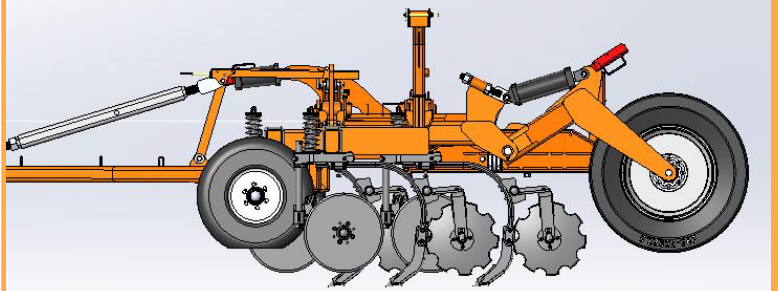
#### ➤ Strength and Accuracy

The Ladder-style frame with 6"x 4" heavy tubing and 22" spacing front to back gives the ability to stagger row units for increased material flow. A tractor specific one-time adjustment allows the operator to set the frame height. A single-point depth hydraulic control then enables the operator to adjust the working depth.



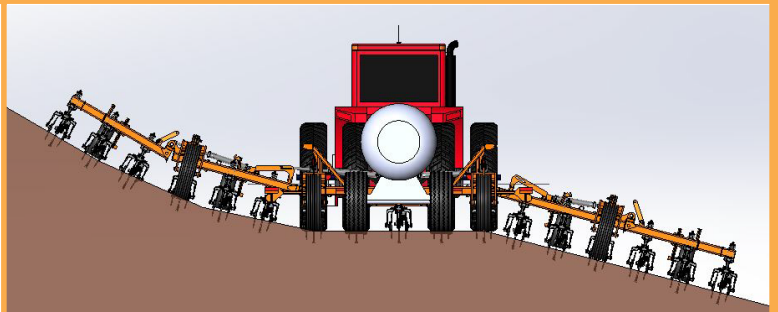
#### ➤ Accurate Depth Control

The row units are mounted in between the front and rear tires to ensure accurate front to back ground-contour following which provides more consistent working depth as the machine travels over undulations such as hills, terraces, valleys, and low spots.



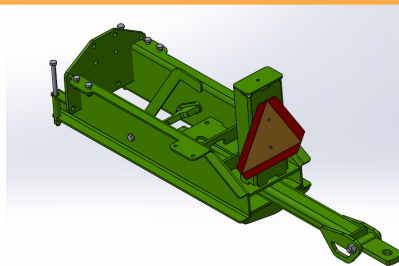
#### ➤ Ground Contour Following Flex

The frame of the Elxir64 17 row 30" can flex down 46", and can flex up 63". This is accomplished by enabling a 40 degree combined vertical travel of the wings closest to the center section, and a 25 degree vertical movement of the second and second to last sections.



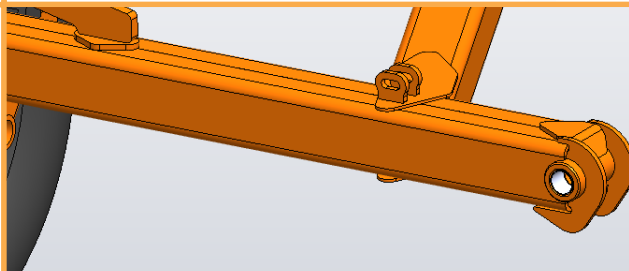
### ➤ Rear Trailer Hitch

The rear hitch extends 16" and at that point it can swing a total of 12" left to right. This simplifies backing up and connecting the tank to the toolbar.



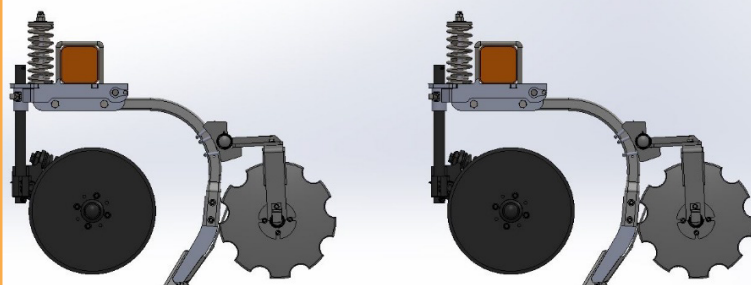
### ➤ Maintenance Free Frame

The entire Elxir frame has zero grease zerks for reduced maintenance. The pivot points on the frame feature self-lubricating, high wear resistant, and maintenance free bushings.



### ➤ Row Unit Style

**Coulter-Shank Style (CS) row units** - The coulters and shanks are mounted to the same 6"x 4" frame member. The stagger to achieve improved residue flow through is done by mounting them on various locations on the ladder frame.



Unit Specifications	Model - Elxir 64
Number of Rows/Spacing	17 Row, 30"
Number of Sections	5
Min. HP Requirement	200-270 HP
Transport Clearance	16"
Working Width	42'-6"
Transport Height	12'-3"
Transport Width	18'-4"
Transport Length	16'-8"
Transport Tires	2 ea. 295/75R22.5
Wing Tires	2 ea. 295/75R22.5
Wing Gauge Wheels	4 ea. 11L-14
Front to Rear Frame Stagger	22"
Frame Tube Size	4" X 6"
Standard Rear Hitch	Extends 16"/Swings 12"
Rear Hitch Light Kit	None
Depth Control	Single Point Adjustment

Unit Specifications	Model - Elxir 64
Hitch	CAT 3 Drawbar
Working Depth	8" to 12"
Downflex - Inside Wing	15 ° - 22"
Upflex - Inside Wing	15 ° - 22"
Downflex -Total	46"
Upflex - Outside Wing	12 ° - 41"
Hydraulic Requirements	3 valves
Coulter Size	20"
Cooler	Raven Vortex 1-1/2"
Controller	No controller
Knives	Shield DF-1PM
Shanks	1-1/4" Flat Bent
Vapor Tubes	4 ea. 3/4"
# of Control Sections	4
Sealers	18" Notched
Current Location	Chillicothe, MO

**FARMADA**  
Ground-breaking farm implements  
for sustainable profits

PO Box 365  
107 South Center St.  
Assaria, KS 67416

Phone: 1-785-493-4962  
Email: [info@farmada.net](mailto:info@farmada.net)  
Web: [www.farmada.net](http://www.farmada.net)

Dealer Info: